



El Dorado County Fire Protection District



Station 25 Run Statistics October 2023

ENGINE 25: 337 Total Calls

- Medical Aid- 260
- Fire- 3
- Traffic Collision- 17
- Public Assist - 26
- Misc. – 27
- Move/Cover – 4

MEDIC 25: 361 Total Calls

- Medical Aid- 285
- Fire- 5
- Traffic Collision- 14
- Transfer -21
- Misc.- 4
- Move/Cover - 32



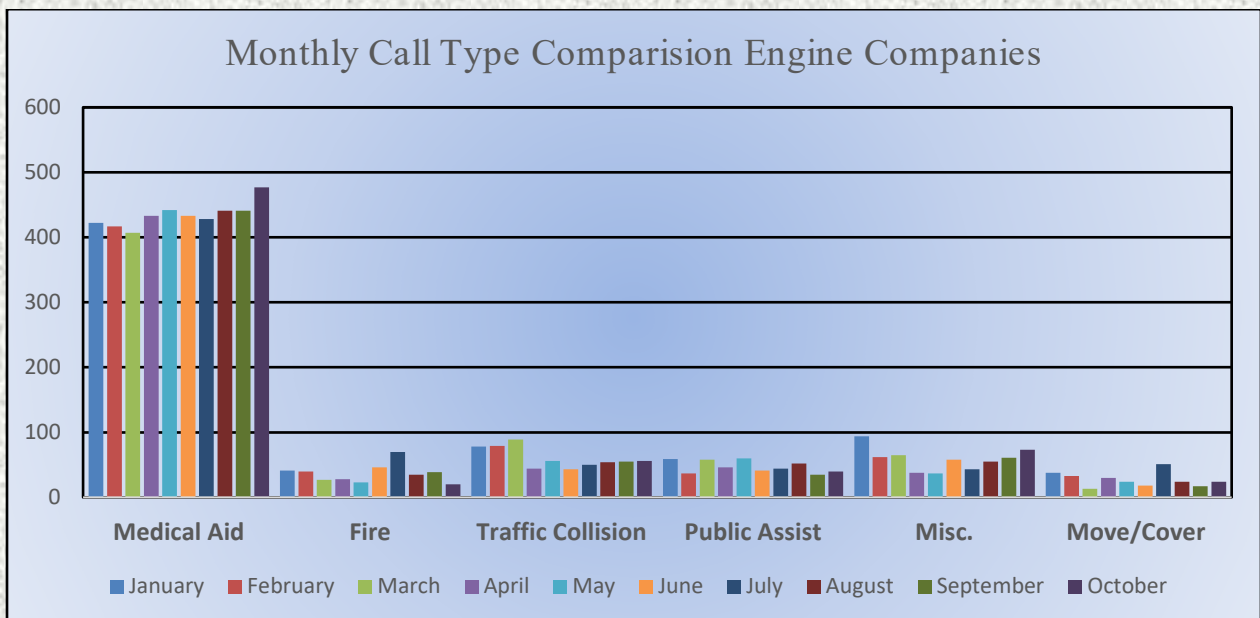
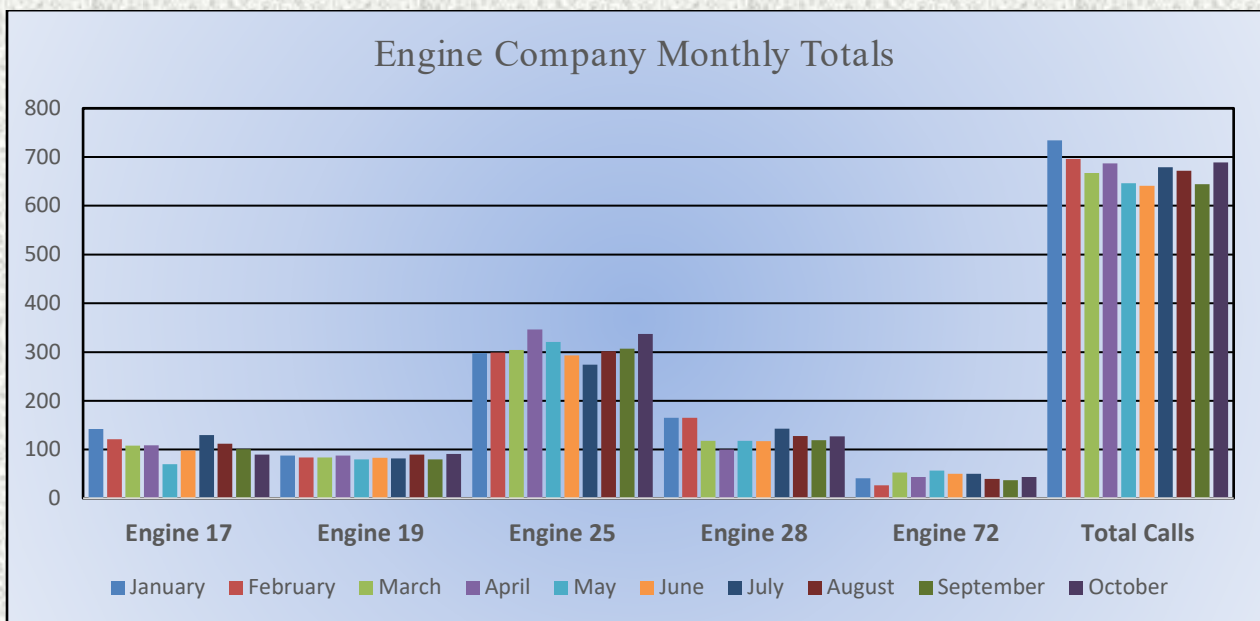


El Dorado County Fire Protection District



Monthly Run Statistics and Call Break Down October 2023 Engine Companies and Medic Units

Total Responses for Engine Companies: 689

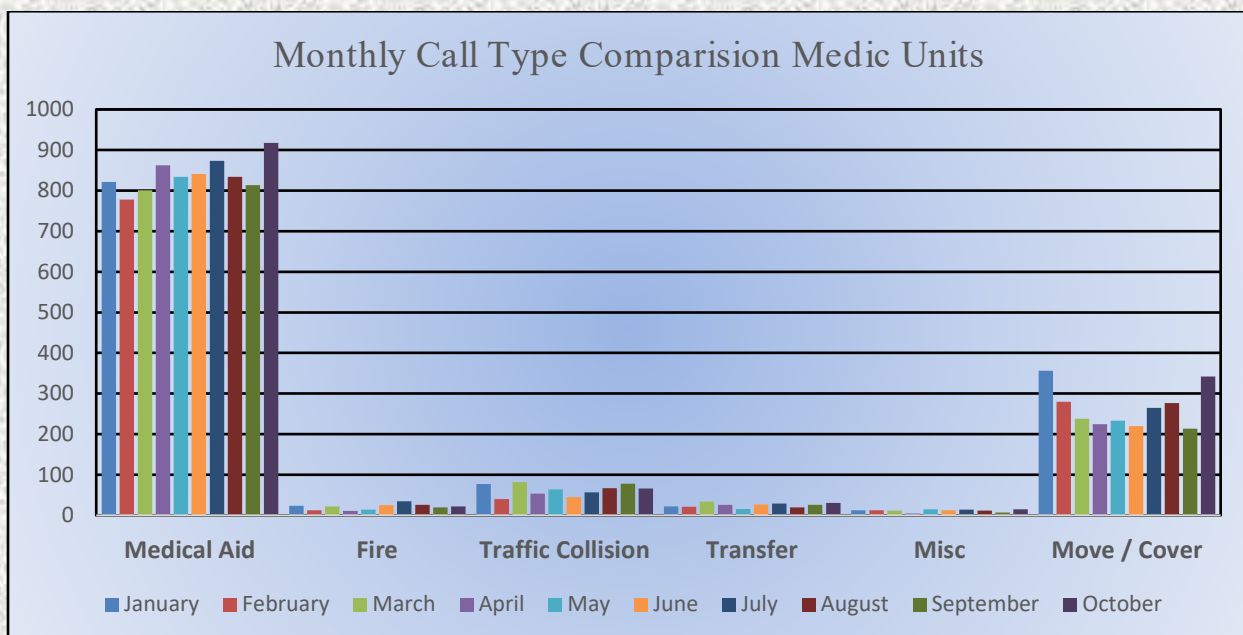
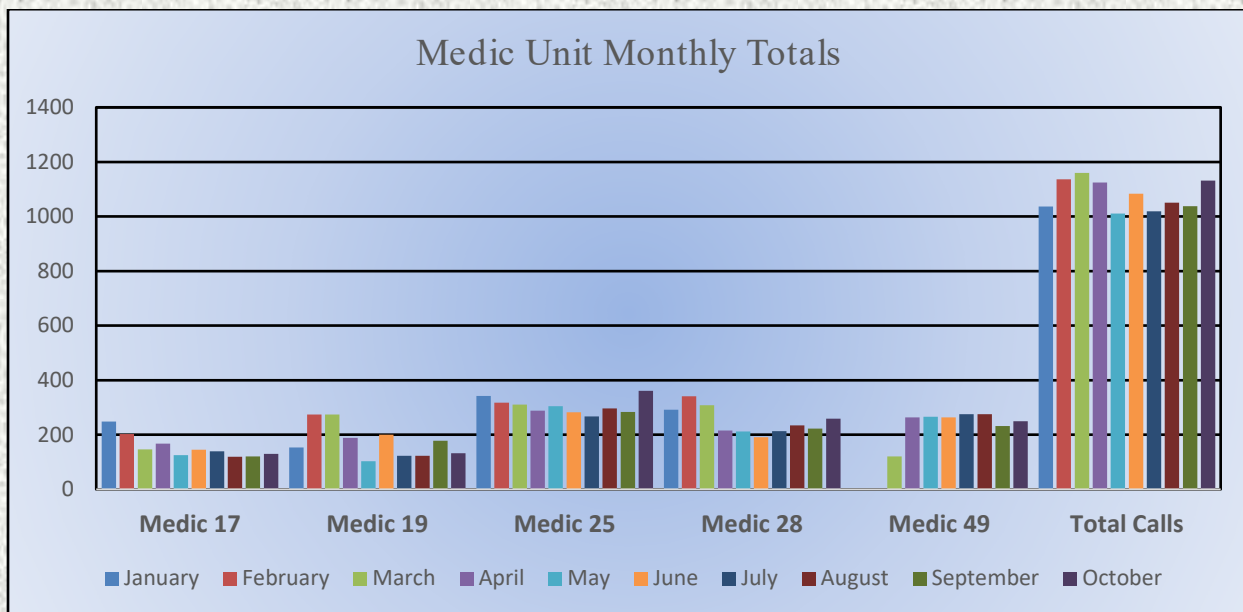




El Dorado County Fire Protection District

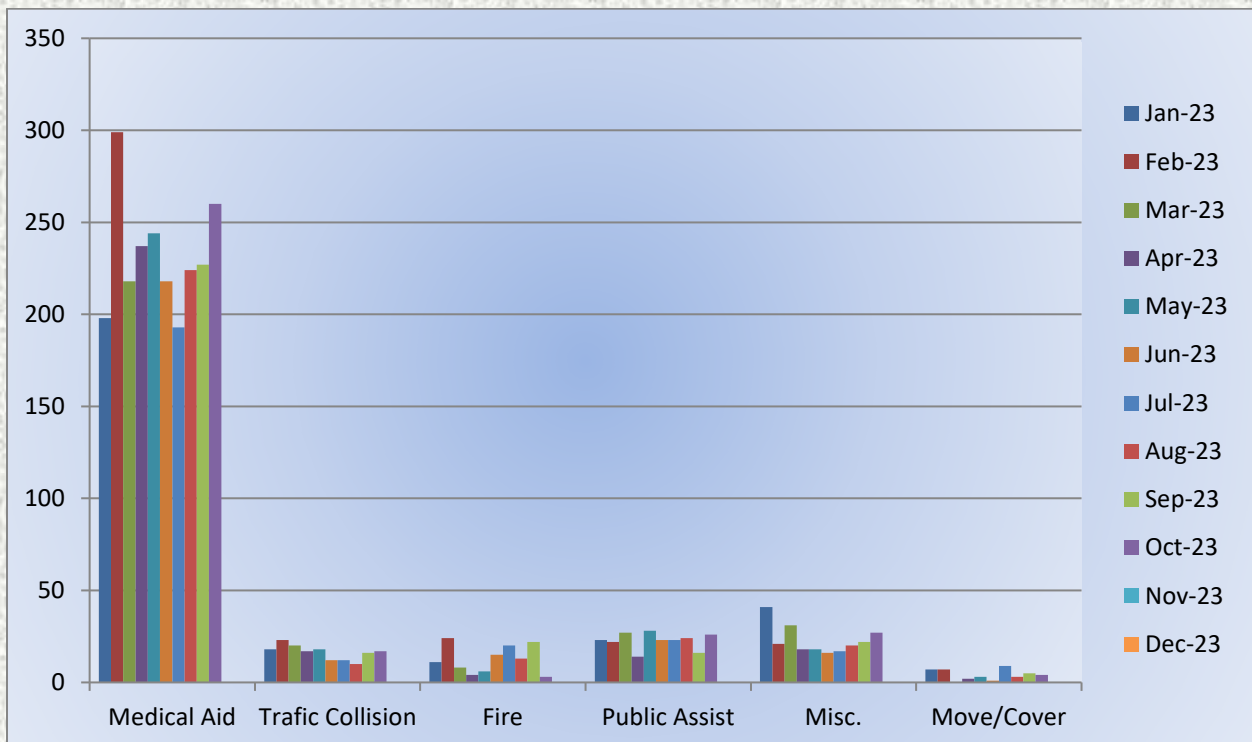
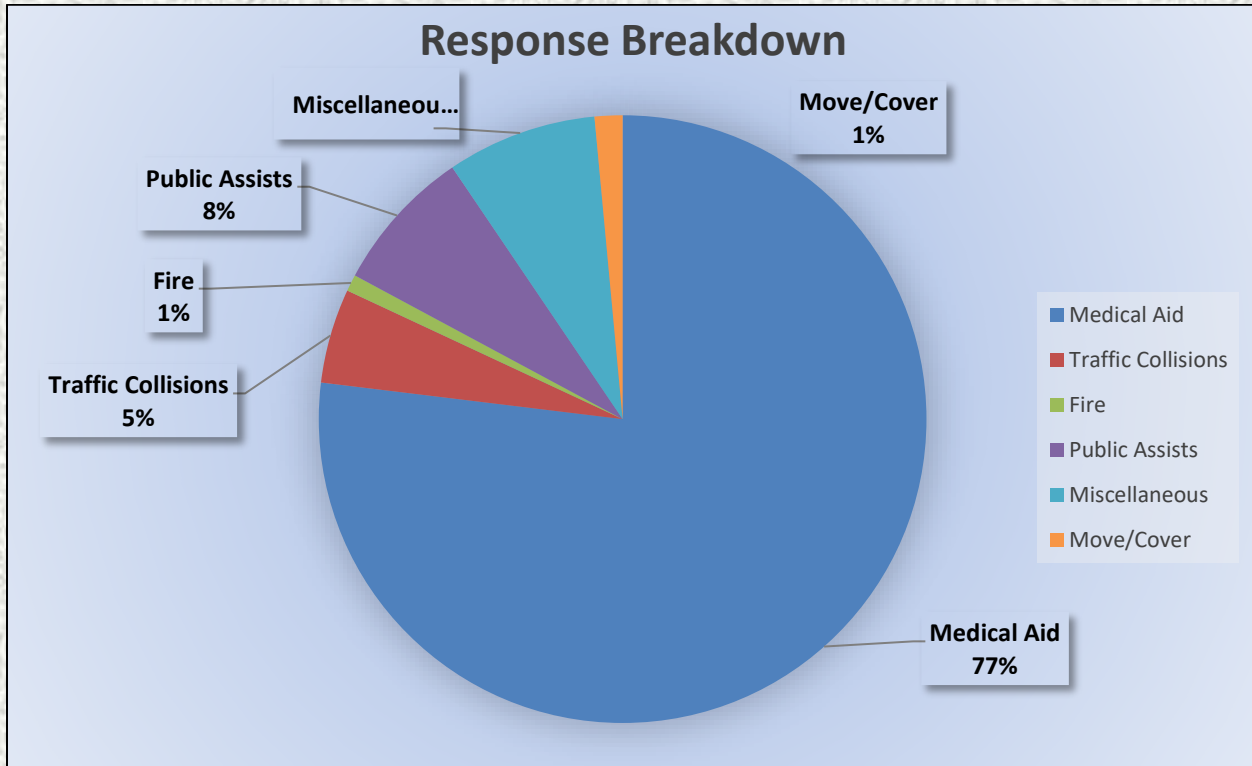


Total Responses for Medic Units: 1,132





Engine 25 Monthly Statistics Comparison





Medic 25 Monthly Statistics Comparison

